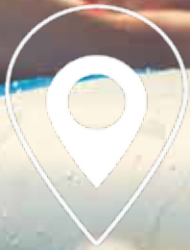


LAKE. LAND. LIFE.



ALBERT LEA 2020 VISITORS GUIDE



THURSDAYS ON FOUNTAIN

Summer Concert Series on
the Lake.

MYRE BIG ISLAND STATE PARK

Experience the Prairie

LAND BETWEEN THE LAKES

Lake Life is Closer Than You
Think

507-373-2316 | www.exploreAlbertLea.com

m
EXPLORE
MINNESOTA™

LAKE. LAND. LIFE.

WELCOME TO ALBERT LEA!

To some it might seem like the middle of nowhere, but to us, it's the middle of everything we hold sacred. Always in close proximity to mother nature, there's plenty of places to spend time with family and friends or solo. So whether you're looking to get in a round of golf, scenic bike ride, or a nice day hike, the Albert Lea area has a piece of land for all of your favorite activities.

On any given day or night you can find something going on that's right up your alley. Take in some live music or show on stage. Sip and share stories on a wine tour. Grab a cup of coffee and relax with friends. And when it comes to food, you can find everything from elegant fine dining to classic dive bar burgers. Albert Lea is the recreational gem of Southern Minnesota. We think it's pretty cool that you can find everything you love about the lakes Up North right here in Southern Minnesota too. Albert Lea is an ideal location if you're looking to stay a little closer to home but still want to get away to the lake.

Welcome to our Lake. Land. Life.



102 W. Clark Street, Albert Lea, MN 56007
8:00 a.m. – 5:00 p.m.
Monday through Friday
(507) 373-2316
(800) 345-8414
www.explorealbertlea.com



#EXPLOREALBERTLEA #ALBERTLEACVB

Back Page Photo Credit Robert Heijerman

LAKE. LAND. VISIT ALBERT LEA.

ABOUT Page 3

Cities in Freeborn County
Lakes in Freeborn County
Protected Areas

MAP Page 4

City Map
Must-See Locations

LAKE Page 6

Fountain Lake Attractions
Albert Lea Lake Attractions
Surrounding Lakes

LAND Page 10

Trails + Camping
Parks & Recreation
Other Activities

LIFE Page 15

Popular Events
Tours + Attractions
Art + Culture

DINE Page 17

Dine + Drink

SHOP Page 19

Shopping + Boutique

STAY Page 21

Lodging information

HOST Page 22

Event Venues

For more information about our lakes, lodging, attractions and events, visit our website or follow us on social media.

WWW.EXPLOREALBERTLEA.COM



Local

CITY GUIDE

LEARN MORE ABOUT THE BUSINESS THAT MAKE ALBERT LEA A GREAT PLACE TO VISIT
@ THE LOCAL CITY GUIDE

ALBERT LEA & FREEBORN COUNTY

RECREATIONAL GEM OF SOUTHERN MN

Freeborn County lies on Minnesota's border with Iowa. Known for its farming communities dotted with beautiful lakes and rivers, these communities provide ample opportunity to experience the diversity of activities available in Minnesota across various terrains, seasons and venues. Albert Lea is the major city located within Freeborn County. It is located at the junction of Interstates 35 and 90, about 90 miles South of the Twin Cities. It is on the shores of Fountain Lake, Pickerel Lake, Albert Lea Lake, Goose Lake, School Lake, and Lake Chapeau.



ALBERT LEA	GLENVILLE
ALDEN	HARTLAND
CLARKS GROVE	HAYWARD
CONGER	HOLLANDALE
EMMONS	MYRTLE
FREEBORN	MANCHESTER
GENEVA	TWIN LAKES

LAKES

Albert Lea Lake	Lower Twin Lake
Bear Lake	Penny Lake
Church Lake	Pickerel Lake
Everhart Lake	School Section Lake
Fountain Lake	State Line Lake
Freeborn Lake	Sugar Lake
Geneva Lake	Trenton Lake (part)
Goose Lake	Upper Twin Lake
Halls Lake	White Lake
Hickory Lake	

LAND

Bear Lake State Wildlife Management Area
Carex State Wildlife Management Area
Halls Lake State Wildlife Area
Moscow State Game Refuge
Myre-Big Island State Park
White Woods County Park
Halls Lake State Wildlife Area
Moscow State Game Refuge
Myre-Big Island State Park
White Woods County Park

LIFE

3rd of July Parade
4th of July Fireworks
Big Island Rendezvous
Freeborn County Fair
F.C. Historical Museum
Historic Downtown
Marion Ross Theater
Thursdays on Fountain
Splash Pad
& more pg. 13-16



www.cityofalbertlea.org
 507-377-4300
info@ci.albertlea.mn.us



www.albertlea.org
 507-373-3938
member@albertlea.org



www.growalbertlea.com
 507-373-3930
contact@growalbertlea.com



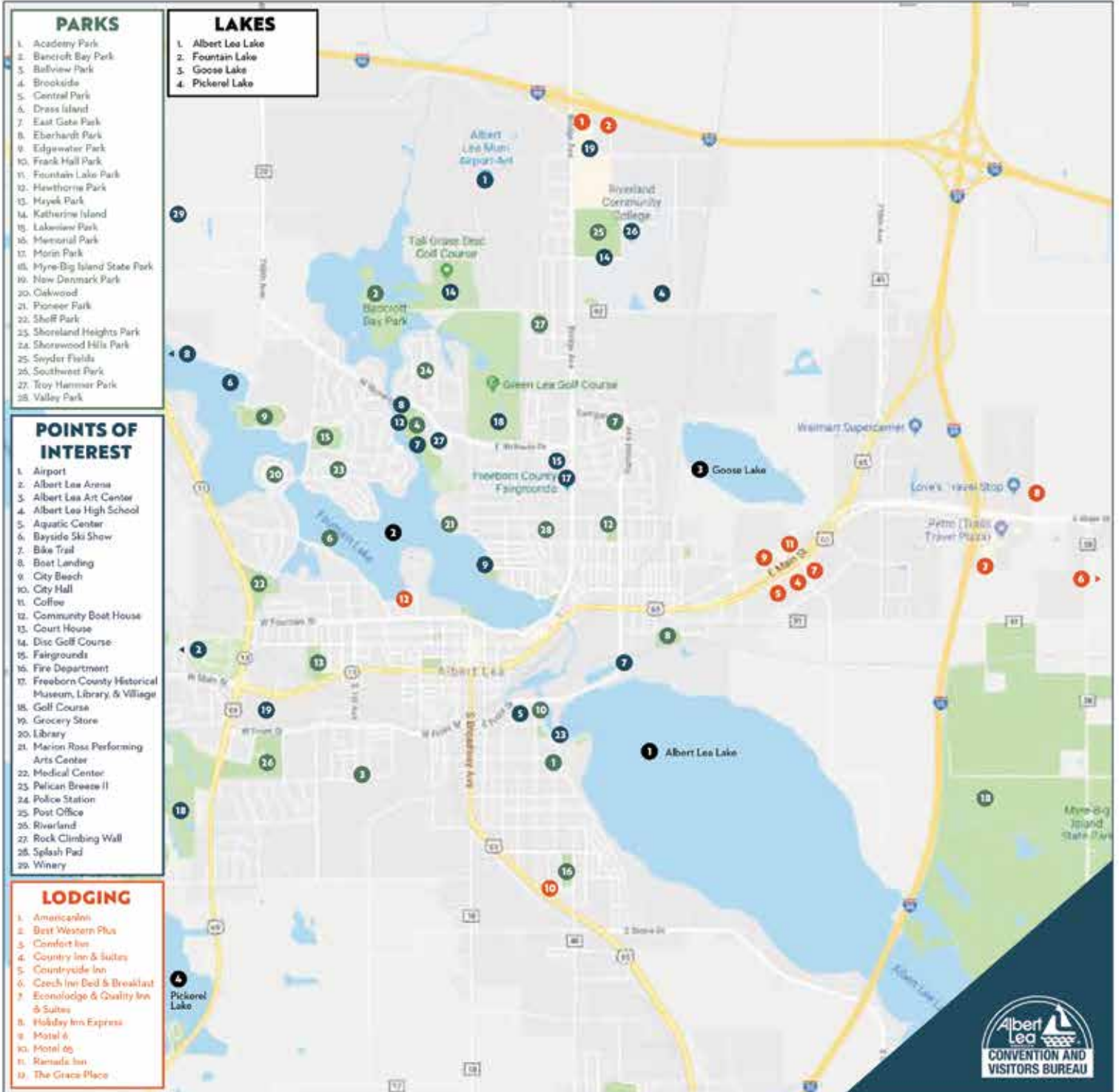
www.alschools.org/community-education
 507-373-3938



www.albertlea.org
 507-373-3938

MUST-SEE LOCATIONS

PLACES TO VISIT IN ALBERT LEA





LAKE.

**BOAT. PADDLE. FISH. CRUISE.
FLOAT. RACE. SKATE. ICE. BEACH.**

EXPLOREALBERTLEA.COM/LAKE

The city of Albert Lea wraps around beautiful Fountain Lake. The water draws everyone together. Whether you enjoy a day walleye and pan fishing, or having fun gliding around the lake on water skis, you'll instantly know why Albert Lea is the middle of EVERYWHERE. Swimming, kayaking, canoeing, pleasure boating, walking and bicycling around Fountain Lake on the Blue Zones path, playing at Edgewater park, having a picnic on Katherine Island. It's all here.



4TH OF JULY FIREWORKS

AT DARK (10:00 p.m.) OVER FOUNTAIN LAKE

Albert Lea Chamber of Commerce Event



"THURSDAYS ON FOUNTAIN" OUTDOOR CONCERT SERIES

EVERY THURSDAY, MAY - AUGUST
AT FOUNTAIN LAKE PARK GAZEBO

Albert Lea Convention & Visitors Bureau Event



"WANDER THE WATER" HALF MARATHON

13.1 MILES AROUND FOUNTAIN LAKE

SATURDAY, SEPTEMBER 26, 2020

www.wanderthewatermn.com



"ROCK -N- ROLL THE LAKES" BIKE EVENT

BIKING EVENT AROUND FOUNTAIN LAKE

SATURDAY, JULY 11, 2020

Albert Lea Convention & Visitors Bureau Event



BASS UNIVERSITY

MARCH 21 - 22 @ WEDGEWOOD COVE

Albert Lea Convention & Visitors Bureau Event



"THE BIG FREEZE" WINTER FESTIVAL

ALL DAY - FOUNTAIN LAKE / EDGEWATER PAVILION

Albert Lea Convention & Visitors Bureau Event



ALBERT LEA ANGLERS ICE FISHING CONTEST

ALBERT LEA LAKE CHANNEL

Albert Lea Convention & Visitors Bureau Event



POWER BOAT RACE

SATURDAY, SEPTEMBER ON FOUNTAIN LAKE

Albert Lea Convention & Visitors Bureau Event



ALBERT LEA CITY BEACH LUAU

FUN FOR THE ENTIRE FAMILY

FOUNTAIN LAKE BEACH, IN JULY

City of Albert Lea -City Hall Event



FOUNTAIN LAKE



FOUNTAIN LAKE BEACH

The beach has something for everyone, a swimming beach for those with or without a boat, plus a sand volleyball court and skate park for the land lovers. Many events are held at the beach including yoga hosted by local studios and parties hosted for the community by the City of Albert Lea Parks and Recreation.

KATHERINE ISLAND, DRESS ISLAND. THE FOUNTAINS & THE MERMAID

Pack a picnic and head to Dress Island or enjoy an ice cream cone from Eat'n Ice Cream Shoppe on Katherine Island. Sit and watch the spectacular sun set over the lake from New Denmark Park. Tourist Tip: The fountains have a fantastic light show at night.

BAYSIDE SKI SHOWS

Catch a show from the Bayside Skiers at Edgewater Bay near the new pavilion. Watch the team do lifts, towers and jumps. Check out their schedule.

baysideskiteam.com

KAYAK, CANOE, PADDLE BOARD RENTALS

Bike, canoe, kayak and stand-up paddleboard rentals during the summer. The Boathouse is located at Brookside boat landing so getting into the water is a breeze. Canoe, kayak, or paddle board in the channel or around the lake. For more info about prices and punch cards visit Albert Lea Community Education online.

alschools.org/community-education/rock-gym-boathouse.

Fountain Lake is 521 acres in size and is located in the City of Albert Lea. Fountain Lake collects water from 51,200 upland acres and its shoreline is predominantly developed. The discharge of Fountain Lake flows over the dam, into a channel and then flows to Albert Lea Lake. Fountain Lake is rather odd in shape and has many bays. The northern most bay is called Bancroft Bay. Near Bancroft Bay is Bancroft Bay Park and Tall Grass Disc Golf Course. A channel connects the main lake and Bancroft Bay and a public boat landing, community boat house and Brookside Park are located here. The western most bay, Edgewater Bay, connects to the main bay under the Hatch Bridge. A second public boat landing is located here. Edgewater Bay is home to South Edgewater Park, Lakeview Park and is where the Albert Lea Ski Club performs. The southern bay, Danes Bay, connects Shoff Park to Fountain Lake. The main bay has many features including two islands: Katherine Island and Dress Island, and many parks including Pioneer Park, New Denmark Park, Fountain Lake Park, and the City Beach Park. The Fountain Lake main waterbody also boasts the iconic fountains and must-see mermaid.

FISHING

Anglers can expect to catch a variety of fish including Bluegill, Channel Catfish, Green Sunfish, Largemouth Bass, Northern Pike, Pumpkinseed, Walleye, White Crappie, and Yellow Perch. Fountain Lake, Albert Lea Lake, Pickerel Lake. Public dock access by Edgewater Bay.

FOUNTAIN LAKE PARK, PUBLIC DOCK & SPLASH PAD

Enjoy music at Fountain Lake Park's "Thursday's on Fountain". Bring your lawn chair or park your pontoon for a night of stellar local tunes. Use the public dock to pull up your boat to grab a Jake's pizza downtown or stay cool at Albert Lea's most popular summer hang out, the Splash Pad.

EDGEWATER PARKS, PAVILION & PUBLIC DOCKS

Edgewater park is a beautiful park shaded by ancient oak trees. Fish off the shores or on the public dock. Rent an event space at the park to host your next big event. Choose from the newly renovated cottage or at the stunning three-season pavilion with scenic views of Edgewater Bay.

cityofalbertlea.org/departments/parks-and-recreation/general-information/



BOATING

Launch your boat at the public dock access on Edgewater Bay and enjoy an afternoon cruising around Fountain Lake. Make it fun for the entire family! Tubing, water skiing, and water boarding are popular activities on the lake, so make some waves for our surfers. Just mind the "No Wake Zone."

ICE FISHING

In the winter months our snow covered lakes become a community all their own with pop-up and permanent houses dotting the shoreline of our favorite lakes. Legend has it, there's Northern Pike that barely fit through holes and Crappies the size of dinner plates out there. Fountain Lake has a winter aeration system in place to prevent the lake from fish kills.

BLUE ZONES WALKING PATH AROUND FOUNTAIN LAKE

Walk the entire foot print of Fountain Lake on the Blue Zones Walking Path. It's the perfect way to experience the city; downtown, residential, schools, parks, and more.



ALBERT LEA LAKE

WALLEYE FISHING

Known for walleye, anglers can also expect to catch a variety of fish including Bluegill, Channel Catfish, Green Sunfish, Largemouth Bass, Northern Pike, Pumpkinseed, White Crappie, and Yellow Perch.

ICE FISHING

During the winter, the channel on Albert Lea Lake is the “hot” fishing spot. Whether you stay for a day or set up for the winter, you’re sure to reel in a few whoppers. This area is chock full of Walleye, Crappies and Northern Pike.

CANOE / KAYAK RENTAL @ MYRE BIG ISLAND

Rent a canoe or kayak for the day at Myre Big Island State Park office and experience the park from Albert Lea Lake. See an array of birds and wildlife from the water. For more info visit dnr.state.mn.us/state_parks/



* PELICAN BREEZE II - BOAT CRUISE

The Pelican Breeze II Tour and Dinner Boat, on Albert Lea Lake, is a 60-foot pontoon river-boat styled boat with a seating capacity for 55 and we are licensed for 62. It features 2 smoke stacks, a paddle wheel, wet bar, tables, and can be enclosed for inclement weather. Enjoy historically-narrated tours, specialty events or plan your own private outing any day of the week. Full catering services and entertainment are available upon request. Every cruise is hosted by a Minnesota-licensed Captain and First Mate. The boat is U.S. Coast Guard and Minnesota certified for your safety.

BLAZING STAR TRAIL

The Blazing Star State Trail is paved and runs from Albert Lea Lake in Albert Lea to Myre-Big Island State Park, a distance of approximately six miles. When completed, the Blazing Star State Trail will be approximately 20 miles long and connect Albert Lea and Austin via Big Island State Park and Hayward.



SURROUNDING LAKES

PICKEREL LAKE

This lake is 588 acres in size. It is approximately 6 feet deep at its deepest point. When fishing, anglers can expect to catch a variety of fish including Black Bullhead, Bluegill, Channel Catfish, Green Sunfish, Northern Pike, White Crappie, Yellow Perch,.

GOOSE LAKE

Goose Lake is a shallow lake that is predominantly surrounded by U.S Fish and Wildlife owned land. In 2014, the District received funds to install a fish barrier at the outlet of Goose Lake to protect it from invasive and rough fish species from entering.

LAKE CHAPEAU (WHITE LAKE)

Lake Chapeau has a surface area of 158 acres and has a maximum depth of 3.5 feet. White has a relatively small upper watershed and flows into Fountain Lake by a small stream. White is one of the District's largest lakes that is surrounded by private property and is only accessible by a small walking path. White, like other lakes in the District, has an electric fish barrier located at the outlet to protect it from new aquatic invasive species.

SHELL ROCK RIVER

The Shell Rock River is a 113-mile scenic, warm and gentle Minnesota stream that begins its southeast journey to the Mississippi River at the outlet of Albert Lea Lake southeast of the city of Albert Lea, joining the Cedar and Iowa Rivers along its course. From the headwaters at Fountain Lake, the Shell Rock River State Water Trail travels 20 miles through central Freeborn County to the Iowa border. Named for the fossilized shells found along its banks, the Shell Rock River offers excellent recreational opportunities, including boating on Fountain Lake, fishing, bird watching and wildlife observation.





LAND.

**HIKE. CAMP. BIKE. SKI. WALK.
RUN. SLED. PUTT. SNOW. CLIMB.**

EXPLOREALBERTLEA.COM/LAND

We live in farm country and we're proud of it. We are grateful for the hard work and effort that is put into the corn and bean crops that surround us. But those fields are not the only thing that make Southern Minnesota landscapes beautiful. Experience natural prairie lands and deciduous woodlands with hundred-year-old massive oaks. Hike it, bike it, run it, sled on it, . . . you choose. We know you'll understand why we call Albert Lea the middle of EVERYWHERE.

TRAILS & PARKS TO EXPLORE



MYRE BIG ISLAND STATE PARK

An oasis of natural diversity in an Oak Savanna.
19499 780th Ave, Albert Lea, MN 56007
dnr.state.mn.us/state_parks/



BLAZING STAR STATE TRAIL

Six mile paved trail connecting to Myre Big Island State Park
dnr.state.mn.us/state_trails/blazingstar/



BLUE ZONES WALKING PATH

This five mile route connects neighborhoods, parks, and the downtown district circling around Fountain Lake.
bluezones.com/blue-zones-results-albert-lea-mn/



SHELL ROCK RIVER STATE WATER TRAIL

From the headwaters at Fountain Lake, this trail travels 20 miles through Freeborn County to the Iowa border.
dnr.state.mn.us/watertrails/shellrockriver




BANCROFT PARK

Hosts of the nationally recognized Big Island Rendezvous Event and disc golf course.



FREEBORN COUNTY SNOWMOBILE TRAIL

250 miles of groomed trails throughout Freeborn County.
 Freeborn County Snowmobile Trail Association



ALBERT LEA AUDUBON SOCIETY

Take a stroll on this beautiful two-mile stretch of natural landscape. The perfect spot to bird watch and view wildlife.
424 Oregon Street, Albert Lea
albertleaaudubon.org

Do you know about...

BLUE ZONES

Albert Lea is the first city in the United States designated as a Blue Zones City and has received international attention for efforts promoting long life and healthy living.





CAMPING & RECREATION

MUST-DO ACTIVITIES

CAMP GROUNDS

MYRE BIG ISLAND STATE PARK

19499 780th Ave
Albert Lea, MN
507-379-7060
dnr.state.mn.us/state_parks

FREEBORN COUNTY FAIRGROUNDS

1031 Bridge Ave
Albert Lea, MN
507-373-6965
freeborncountyfairgrounds.com

HICKORY HILLS CAMPGROUND

15694 717th Ave
Albert Lea, MN
507-852-4555
hickoryhillscampground.com

KOA - ALBERT LEA/AUSTIN

84259 County Rd 46
Hayward, MN
507-373-5170
koa.com/campgrounds/albert-lea



RECREATION



ALBERT LEA FAMILY YMCA

Programs and fitness activities for all ages. Swimming pool, fitness center, weight gym, racket ball courts, outdoor fields & more.
2021 W Main Street | (507) 373-8228
ymcaal.org



ALBERT LEA CITY ARENA

Ice is available year-round, with the exception of the months of July and August.
701 Lake Chapeau Drive | (507) 377-4374
cityofalbertlea.org/



ALBERT LEA AQUATIC CENTER

Zero depth splash pool with interactive features including tumble buckets, deck sprays, a mushroom waterfall, bubblers, a five arm water fountain, AND a 226 foot water slide!
321 James Ave, Albert Lea, MN 56007
cityofalbertlea.org/



PICKLEBALL COURTS

6 outdoor pickleball courts for the public.
321 James Avenue | Frank Hall Park | YMCA



ROCK GYM

Indoor climbing facility for the public.
Hours: Climbing Club | Tuesday 6pm-9pm
Open Climb | Friday & Saturday 6pm-9pm
Fee: \$10 (includes equipment)
211 W Richway Drive | Community Ed |
507-379-5824



SNYDER FIELD COMPLEX

Lighted athletic complex with 5 ball diamonds, concession stand, and 4 sand volleyball courts.
2404 Bridge Avenue | cityofalbertlea.org
507-377-4370

GOLF COURSES

CLARKS GROVE GOLF CLUB

9 Holes
76785 270th St, Clarks Grove, MN 56016
507-391-0169



GREEN LEA GOLF COURSE

Club and cart rental, pro shop, lessons, club repair, restaurant.
18 Holes Par 72
101 Richway Drive | (507) 373-1061
greenlea.com



OAK VIEW GOLF CLUB

9 Holes Par 72
25177 665th Avenue, Alden, MN | (507) 863-2288
oakviewgc.com



WEDGEWOOD COVE GOLF CLUB

Pro shop, driving range, practice green, and restaurant.
18 Holes Par 72 | 5 Tee Placements
2200 W 9th Street | (507) 373-2007
wedgewoodcove.com

DISC GOLF COURSES

BANCROFT BAY DISC GOLF COURSE

Oak Island DGC | 18 holes Tall Grass DGC | 18 holes
303 W Hammer Road | 507-377-4370



RIVERLAND COMMUNITY DISC GOLF COURSE

18 holes | par 54
2200 Riverland Drive | pdga.com

MYRE BIG ISLAND STATE PARK

An oasis of natural diversity. It is home to trails that take visitors around wet lowlands, oak savanna, and grasslands. Albert Lea Lake and park marshes draw hundreds of waterfowl during migration. Oak savanna and prairie landscape, including wetlands, dominate most of the park. One of the park's more distinctive aspects is the 116-acre Big Island, covered with a maple and basswood forest. Another is the glacial esker in the park's northeast section. Blazing Star Trail bike trail runs from Albert Lea to the state park. The park also offers birdwatching, hiking, canoeing, and camping. Fee: Daily Park Permits | \$7 Daily Camping Rate | \$17 - \$21



PARKS + RECREATION

Albert Lea is host to over 40 city parks. Many have playgrounds, tables, and areas for picnics. Challenge yourself to see if you can explore each one! Parks & Recreation is also host to a number of cool family friendly events such as movies in the park, candy cane hunt, H2Whoa, and more. Check out their events online.

cityofalbertlea.org | 507-377-4370

COMMUNITY EDUCATION

Albert Lea Community Education, located in the main entrance of the Marion Ross Theater, coordinates a catalog chalk full of fun. Check out their seasonal selection online.

alschools.org/community-education | 507-379-4834

WELLNESS + OTHER



MERAKI STUDIO

A space for the creative arts. Dance, fitness, music, art, photography, events.
115 N Newton Ave | 507-581-0731
themerakistudio.com



HEARTWAVES STUDIO

Creative well-being center featuring yoga, pilates and a salt cave.
105 N Broadway Ave | 507-473-0002
heartwavesstudio.com



GLENVILLE BEACH

Spring-fed swimming pond with lifeguards, diving boards, waterslide, concessions.
\$3 child \$4 adult | 507-448-9989
15863 795th Ave, Glenville, Minnesota 56036



SPLASH PAD

FREE recreational area filled with timed fountain for families and children to enjoy water play. Corner of Fountain Street & Broadway



HAMMER SPORTS COMPLEX

Cheer on our high schools sports teams at the beautiful new sports complex. Corner of Bridge Ave. & Hammer Rd
alschools.org

***FUN FACT -** The new football field is named after a former football coach, Jim Gustafson. The complex continues to carry the Hammer name.

LIFE.

ART. MUSIC. EVENTS. CULTURE.
HISTORY. FAIR. CRUISE.

[EXPLOREALBERTLEA.COM/LIFE](https://explore.albertlea.com/life)





COMMUNITY

3RD OF JULY PARADE

albertlea.org

4TH OF JULY FIREWORKS

albertlea.org

FREEBORN COUNTY FAIR

freeborncountyfair.com

THURSDAYS ON FOUNTAIN

facebook.com/albertleatourism

CUISINE

BIG ISLAND BBQ

bigislandfestivalandbbq.org

GOURMET FOOD AUCTION

bigislandfestivalandbbq.org/auction

CRUISE TO THE COVE

wedgewoodcove.com

FARMERS MARKET

facebook.com/ALFarmersMkt

ART + CULTURE

ART & GARDEN TOUR

thealbertleaartcenter.org

LIGHTS IN THE VILLAGE

<https://www.fchmmn.org/>

DRIVE THRU LIVE NATIVITY

newlifechristianal.org

FESTIVAL OF THE TREES

thealbertleaartcenter.org

ALBERT LEA PUBLIC LIBRARY ADULT & KIDS EVENTS

alplonline.org

CELLFIE TOUR

See Historic Downtown. Start at the corner of S Broadway Ave and E William St, look for the information kiosk.

MUSIC + ENTERTAINMENT

THURSDAYS ON FOUNTAIN

actonbroadway.com

MARION ROSS THEATER

actonbroadway.com

CANTORI CONCERT

facebook.com/albertleacantori

WINE, WHEELS & WILDFLOWERS

threeoakwines.com

MET OPERA

actonbroadway.com

INTERCHANGE MUSIC + TRIVIA

theinterchangebistro.com

CEC MALL 7 MOVIE THEATER

2550 Bridge Ave | 507-373-7933
cectheaters.com

FESTIVALS

FREEBORN COUNTY FAIR

freeborncountyfair.com

BIG ISLAND RENDEZVOUS

bigislandfestivalandbbq.com

EDDIE COCHRAN CAR SHOW & MUSIC FESTIVAL

facebook.com/eddiecochranevent

WIND DOWN WEDNESDAY SUMMER FESTIVAL

winddownwednesday.com

HISTORIC DOWNTOWN

FALL FEST

facebook.com/fallfest-albertlea

HALLOWEEN SPOOKTACULAR

facebook.com/albertleaconvention

DEER WIDOWS SHOPPING EVENT

facebook.com/albertleamainstreetprogram

HOLIDAY BAZAAR ON BROADWAY

facebook.com/albertleamainstreetprogram

SPORT + HOBBY

6-LEGGED 5K PET AUTHORITY

thepetauthority.com

SPARKY GOLF TOURNAMENT

wedgewoodcove.com

SHORT STOP GOLF TOURNAMENT

greenlea.com

COREY GOODNATURE GOLF TOURNAMENT

coreygoodnature.com

MARCH MADNESS PREVIEW SHOW

facebook.com/marchmadnesspreviewshow

SHINEFEST TRACTOR RIDE

facebook.com/shinefesttractorride

LEGACY AMERICAN LEGION INDEPENDENCE MOTORCYCLE RUN

americanlegionpost56.com

HOCKEY TOURNAMENTS

albertlea.pucksystems2.com

ROCK-N-ROLL THE LAKES

facebook.com/rocknrollthelakes

WANDER THE WATER HALF MARATHON

wanderthewatermn.org

SHOPPING

WEDDING BRIDAL SHOW

facebook.com/Northbridge-Mall

ANTIQUA CRAFT + VENDOR SHOWS

facebook.com/Northbridge-Mall

SMALL BUSINESS SATURDAY PASSPORT TOUR

shopalbertlea.org



ALBERT LEA ART CENTER

Galleries & classes
Hours: Tuesday-Saturday 10am-2pm
101 S Broadway | (507) 373-5665
thealbertleaartcenter.org



FREEBORN COUNTY FAIRGROUNDS

Six Best Days of Summer. The Freeborn County Fair has a long history of exciting Grandstand Entertainment & large midway. August 4 - 9, 2020

1031 Bridge Ave | (507) 373-6965
freeborncountyfair.com



FREEBORN COUNTY ARTS INITIATIVE

Promoting the growth of the community through creative and culturally vibrant programming.

224 S Broadway | (507) 721-1285
freeborncountyartsinitiative.com



THURSDAYS ON FOUNTAIN

Popular summer concert series at Fountain Lake Park Gazebo. Bring your lawn chair or listen from your boat.

May - August | Fountain Lake Park
freeborncountyartsinitiative.com



HISTORIC DOWNTOWN

Shopping, dining, events, entertainment, and history come together in Albert Lea's beautiful downtown area

HISTORIC BUILDINGS TOUR

Experience Historic Downtown Albert Lea on the Historic Walking Tour. Pick up a guide at one of the kiosks Downtown.



FOOD TRUCKS

Experience the best local cuisine while exploring area parks, events, and attraction. Albert Lea now has five food truck locations. Find trucks during the week or at special events like Thursdays on Fountain and Wind Down Wednesday.

- North Broadway Parking Lot
- Brookside Landing Parking Lot
- Bancroft Park Lower Parking Lot
- Fountain Lake Beach Parking Lot
- Frank Hall Park



MARION ROSS PERFORMING ARTS CENTER

Performances include ACT Theater, comedies, dance, Metropolitan Opera Live on Screen, National Theater in HD, along with special events and national touring artists.

147 N Broadway | (507) 369-3050
actonbroadway.com



EDDIE COCHRAN CAR CRUISE & MUSIC FESTIVAL

Eddie Cochran Car Show and Music Festival is an annual celebration featuring Rockabilly, rock and roll, hot rods, and collectible cars. Hosted by the Freeborn County Historical Society.

Freeborn County Historical Museum
facebook.com/eddiecochranweekend



CALICO HUTCH

Book a special event for you and your girlfriends, sign up for a quilting class, or explore the endless selection of quilt patterns and sewing materials.

Hayward, MN | (507) 377-1163
calicohutchquiltshop.com



PELICAN BREEZE II

Take a historic guided cruise with the captain and first mate on Albert Lea Lake. This 60 foot riverboat has Friday night and Sunday day cruises.

Frank Hall Park Boat Landing | (507) 383-7273 | pelicanbreeze.org



CZECH INN B&B AND RETREAT

Gather friends and family for a reunion, girls weekend or a crafting getaway.

Hayward, MN | (507) 373-2477
czechinnandretreat.com



NEW DENMARK PARK

*A must-see destination in Albert Lea. This beautiful park is home to the icon fountains and mermaid.

Green Ave & Bridge Avenue
1.1 acres | across from Katherine Island



VALHALLA RESORT

The perfect place to stay for a weekend with your friends, to work on all your crafting needs, or to enjoy time away from your busy everyday life. Accommodate up to 10 people. Cricut and crop classes offered once a month.

Albert Lea, MN | (507) 383-6858
valhallaretreat.com



BIG ISLAND RENDEZVOUS

Voted one of the state's Top 25 Festivals. Celebration of the history during the early Frontier America. First weekend in October.

Bancroft Park
bigislandfestivalandbbq.com



BEST SPOTS FOR LOCAL BANDS & ENTERTAINMENT

THE INTERCHANGE BISTRO
112 ON BROADWAY
THREE OAK WINERY
THE EAGLES
THE MOOSE
BEND IN THE ROAD
WEDGEWOOD COVE



WIND DOWN WEDNESDAY

Wind Down Wednesday is a summer market & music festival where our goal is to pull everyone together for one fun day each month to enjoy each other's company, shop for unique items, eat great food, and enjoy some great entertainment. winddownwednesday.com



THREE OAK WINERY

Enjoy a glass of award winning wine, walk the vineyard, take in breathtaking views of the grapes and wildflowers.

73505 225th | (507) 369-5267
threeoakwines.com



CIVIC MUSIC

Purchase tickets to see local talent, the MET live opera and more!
Box Office Phone: 507-377-4371
Hours: Thursdays from 4-7PM and one hour before the start of each transmission

147 N Broadway | (507) 373-2316
albertleacivicmusic.com



THE EVERGREEN TREE FARM

Family owned Christmas tree farm providing cut your own or pre cut trees, wreath making, and a family friendly atmosphere to create memories and tradition.

theevergreens.us | (507) 391-0757



FREEBORN COUNTY HISTORICAL MUSEUM

Established in 1948, the Freeborn County Historical Society consists of a museum, research library & village. The Museum showcases over 40 exhibits featuring businesses, destinations and artifacts.

1031 Bridge Ave | 507-373-8003
fchmmn.org



DINE + DRINK

**BREAKFAST.
LUNCH.
DINNER.
ICE CREAM.
SNACK.
TO-GO.**

Whether you're a food truck fanatic, wine connoisseur, or burger junkie, Albert Lea boasts an excellent selection of restaurants for every palate. PLUS! Depending on your interests, your meal can be served with a giant side of FUN.

Sign up for Trivia Night at The Interchange or a fondue event at 112 on Broadway. Take your pals to the B&B and see who can finish a stack of nationally recognized pancakes. Elbows up is the only way to enjoy Southern Minnesota's best burger at The Elbow Room. Say "hello" to Grandma at Grandma's Kitchen. Have a birthday like no other at Plaza Morena. Whisk yourself away for picnic in a beautiful Chinese garden, at China Restaurant or enjoy an ice cream cone from Eat'n Ice Cream by the Fountain Lake. The experiences are endless!



1910 FRESH

122 Bridge Ave | 507-369-5615
1910fresh.com

112 ON BROADWAY

112 S Broadway | 507-373-3000
112onbroadway.com

APPLEBEE'S

2740 Bridge Ave | 507-373-0380
applebees.com

ARBY'S

2707 Bridge Ave | 507-373-3061
arbys.com

ASIAN MARKET & DELI

726 Marshall St | 507-473-2019

B&B CAFE

321 Sibley St | 507-373-1921

BEND IN THE ROAD

Manchester MN | 507-826-3441

BLEACHERS SPORTS BAR & GRILL

1002 S Broadway Ave | 473-2028

BURGER KING

2011 E Main St | 507-373-3365
bk.com

CABIN COFFEE

152 Bridge Ave | 507-373-2202
cabincoffeecompany.com

CARIBOU COFFEE

2708 N Bridge Ave | 507-373-2291
2717 Bridge Ave | 507-373-2257
820 Happy Trails Ln | 507-373-4200

CASA ZAMORA

2006 E Main St | 507-373-6475
casazamorafoods.com

CHINA RESTAURANT

805 E Main St | 507-377-8888

DAIRY QUEEN

2530 Bridge Ave | 507-373-9583
dairyqueen.com

DIANA'S DINER

522 S Broadway | 507-377-1555

DOMINO'S

910 S Broadway | 507-373-3331
dominos.com

EAT'N ICE CREAM

424 Bridge Ave | 507-373-1836

ELBOW ROOM

310 E 8th St | 507-373-1836

ERBERT & GERBERT'S

132 Bridge Ave | 507-473-2033
erbertandgerberts.com

GEORGE'S OF GENEVA

Geneva MN | 507-256-4501

GENEVA BAR & GRILL

Geneva MN | 507-256-7278

GODFATHER'S PIZZA

509 E Main St | 507-373-1447
godfathers.com

GRANDMA'S KITCHEN

115 E Clark St | 507-552-1599

GREEN LEA

101 E. Richway Dr | 507-373-1061
greenlea.com

GREEN MILL

2218 E Main St | 507-377-3000
greenmill.com

HARDEE'S

1147 S Broadway | 507-373-6101
hardees.com

HAROLD'S BAR

1318 E Main St | 507-373-0965

HERITAGE RESTAURANT

2301 E Main St | 507-369-5786

IRON SKILLET SKOL TAVERN

820 Happy Trails Ln | 507-379-2616

THE INTERCHANGE

211 S Broadway | 507-383-4070
theinterchangebistro.com

JAKE'S PIZZA

126 W Clark St | 507-373-7350

KFC

2221 E Main St | 507-373-9928
kfc.com

MAIN STREET

2306 E Main St | 507-668-4060

MCDONALDS

2808 Bridge Ave | 507-377-9573

609 E Main St | 507-377-1355

840 Happy Trails Ln | 507-377-6098
mcdonalds.com

MINE AGAIN

Alden MN | 507-874-3784

NANCY'S CAFE

120 S Washington | 507-373-5469

PAPA MURPHY'S

142 Bridge Ave | 507-377-7075
papamurphys.com

PEPPERED COW

Mobile truck / Northbridge Mall
pepperedcow.com | 507-402-3300

PERKIN'S

2215 E Main St | 507-377-1624
perkinsrestaurants.com

PIZZA RANCH

2430 Bridge Ave | 507-377-2166
pizzaranch.com

PLAZA MORENA

2588 Bridge Ave | 507-373-9194

QDOBA

2522 Bridge Ave | 507-369-5211
qdoba.com

SUBWAY

1550 Blake Ave | 507-373-9883
718 E Main St | 507-373-1604

SOMEWHERE ELSE BAR

66918 180th St Conger MN | 507-265-3325

TACO BELL

820 Happy Trail's Lane | 507-379-2672
tacobell.com

TACO JOHN'S

2225 E Main St | 507-373-9818
tacojohns.com

TACO KING

1649 Blake Ave | 507-373-2893

104 S Broadway | 507-377-2485

TAILGATERS BAR & GRILL

Glenville MN | 507-448-3868

THIRSTY FOX PUB & GRILL

1105 S Broadway Ave | 507-369-5911
thirstyfoxpub.com

TB3'S BAR & GRILL

Freeborn MN | 863-2111

TRUMBLE'S

1811 E Main St | 507-373-2638
trumblesrestaurant.com

WEDGEWOOD COVE

2200 W 9th St | 507-373-2007
wedgewoodcove.com

WENDY'S

2751 E Main St | 507-377-2704

WOK N ROLL

2344 Hendrickson Rd | 507-377-1155

YANKEE CATERING

Northbridge Mall | 507-383-6512

YOU BETCHA CAFE

Alden MN | 507-402-1066

CRESCENDO

118 S Broadway | 507-377-2425
crescendodining.com

Family owned and operated.
Opened in May 2001

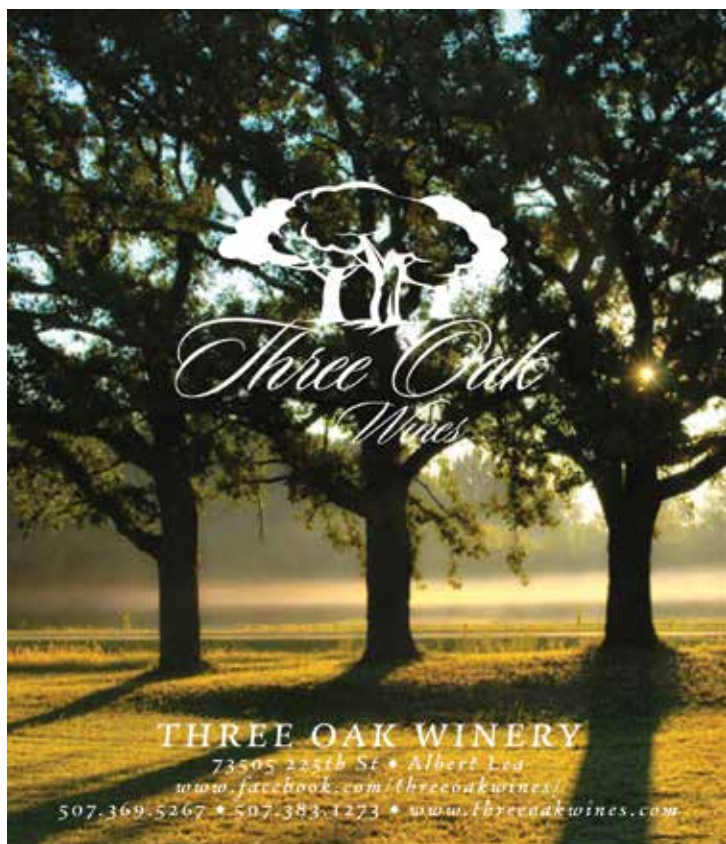
Looking for a fine-dining destination? Crescendo is known for its ever-changing menu with gourmet entrees featuring the freshest ingredients. Artistic platings of California-style cuisine reflecting the influences of Classic French, Italian and Eastern origins delight your eyes AND your palate.

With over 100 wines on the menu, we have recommendations for meal-friendly pairings for red and white wine-lovers alike. Not a grape fan? Peruse the list of speciality beers and cocktails.

We serve to delight. Call today for your next reservation!



118 S Broadway Ave - Albert Lea - 507.377.2425 - crescendodining.com

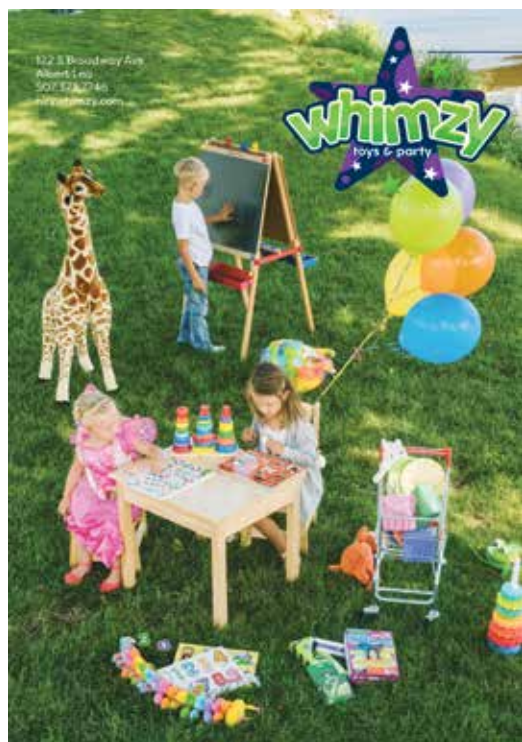


THREE OAK VINEYARD & WINERY

73505 225th St | 507- 383-1273
threeoakwines.com

From nursery to vineyard and winery, the Three Oak property has a long history of growing things... good things! Three Oak Winery + Vineyard has won many awards for their white, red, rose and sweet wines. A good glass of wine is even better when it's paired with live music, locally processed meat and cheese trays, and beautiful views of the wildflowers in August from the large outdoor deck. Hours vary depending on the season. See you on your next wine tour!





THE COLOR WHEEL GIFTS + DECOR

122 W Main St | 507- 402-5650
@thecolorwheelal

Locally owned boutique featuring locally made, handmade goods such as gifts, decor, leather goods, baby, clothing and more.

WHIMZY TOYS + BABY

122 S Broadway Ave | 507- 373-7746
heywhimzy.com

Whimzy is all about fun! We are the architects of amusement, the curators of creativity, and the providers of play-time. At Whimzy, we are on an endless quest to find the coolest products on this planet, and we search high and low to bring our customers the best selection of toys and party supplies for all occasions. We are proudly located in historic downtown Albert Lea, MN, providing southern Minnesota and northern Iowa with everything needed to create life-long memories.

BETWEEN FRIENDS BOUTIQUE

144 S Broadway Ave | 507- 473-2111
@betweenfriends2.boutique

Trendy womens boutique that provides a shopping experience that can only be had between friends.

NORTHSTAR POWERSPORTS + MARINE

2120 Consul St | 507- 373-9000
northstarpowersports.com

Southern Minnesota's premiere Alumacraft, Lund, Bennington, Polaris dealer.



A BEST SEW + VAC

2720 Bridge Avenue | 507-377-8244
myabest.com

ADAMS ORIGINALS

238 S Broadway | 507-369-0205

ADDIES FLORAL & GIFTS

216 S Broadway | 507-377-2081
addiesfloral.com

ALMC GIFT SHOP

404 Fountain Street | 507-373-2384

BED STORE & MORE

222 E Clark Street | 507-377-2236

BG BRICK GIRLS

225 S Broadway | 507- 373-2514

BIG DREAM ORGANICS

Skyline Mall | 507-438-0676

BOMGAARS

1721 W Main St | 507-373-1745
bomgaars.com

BORDER MARKET

137 Main St Emmons, MN | 507-297-5000

BRICK FURNITURE

225 S Broadway | 507-373-2514
brickfurniturealbertlea.com

BROADWAY BIKE CO.

114 S Broadway | 507-373-2060
broadwaybikeco.com

DAISY BLUE

119 South Newton Ave | 507 373-0229
daisybluenaturals.com

DOLLAR GENERAL

201 W Main Street | 507-369-6127

DOLLAR TREE

2308 Hendrickson Road | 507-373-2230

DUNHAM'S SPORTS

2500 Bridge Avenue | 507-369-1444
dunhamssports.com

ETCETERA CONSIGNMENT

Skyline Mall | 507-377-8267

ELLEN + JANE BOUTIQUE

220 West Clark Street | 507-473-2001
ellenandjaneboutique.com

FISHER'S JEWELERS

202 S Broadway | 507-373-3925
fishersfinejewelersmn.com

FRAMES R US

228 S Broadway | 507-377-0848

GYPSY K CONSIGNMENT

2510 Bridge Ave | Northbridge Mall
507-473-2117

GARDEN DIVA

80920 County Rd 46 | 507-377-2573

**CLOTHING.
GIFTS.
TOYS.
DECOR.
PET.**

SHOP

BOUTIQUE +



Albert Lea is lucky to be home to numerous independently owned shops and boutiques. These beautiful stores are filled with unique goods and run by passionate owners intent on bring you a one-of-a-kind experience. Want to learn more? Our Local City Guide (by MORTARR) provides a chance to meet the locals!

FACEBOOK.COM/THELOCALCITYGUIDE

**HILLS GARDENS**

2512 W Main Street | 507-373-7253
hillsgardens.com

HYVEE FLORAL

2708 Bridge Ave | 507-377-2257
https://www.hy-vee.com/stores/detail

INNOVISION EYE CARE

232 So Broadway | 507-373-0627

JUNKTION MARKET

136 S Broadway | 507-402-0939

LEUTHOLD'S

2426 Bridge Avenue | 507-373-3142
leutholdsalbertlea.com

MARY GO ROUND

106 W Clark Street | 507-373-7911

MARTIN'S CYCLING & FITNESS

1137 S Broadway | 507-377-3704
martinscyclingandfitness.com

MAURICES

2235 Leland Drive | 507-373-8497
maurices.com

MARKET PLACE

1619 W Main St | 507-373-7357

MIDWEST ANTIQUES

302 S Broadway | 507-369-5733

MORRIS FURNITURE

1909 East Main Street | 507-373-6434
morrisfurniture.com

NEW TO YOU

123 N Broadway | 507-373-0388

NORTHBRIDGE MALL

2510 Bridge Avenue | 507-377-3185

PLYMOUTH SHOE STORE

129 S Broadway | 507-373-6793
plymouthshoestore.com

RALEIGH'S ACE HARDWARE

2525 Bridge Ave | 507-377-8636

REINERTSON'S EMBROIDERY

230 S Washington Ave | 507-373-0751
reinertsonsembroidery.com

SIMPLY CHARMING CERAMICS

Skyline Mall | 507-339-7990

SALLY BEAUTY

2343 Leland Dr | 507-369-2404
sallybeauty.com

SHOE SENSATION

2339 Leland Drive | 507-552-1664

E-Z OWN PLUS

Northbridge Mall

STADHEIM JEWELERS

215 S Broadway | 507-373-3440
stadheimjewelers.com

SLUMBERLAND FURNITURE

822 S Broadway | 507-377-3001

THE CHAPEL COMICS

115 S Broadway | 507-383-3654

THE SEED HOUSE

1414 West Main Street | 507-373-3161
alseed.com

THE PET AUTHORITY

2014 E Main St | 507-373-2505

TIGER CITY SPORTS

920 S Broadway | 507-373-4366

WALGREENS

703 E Main St | 507-369-0260
walgreens.com

WALMART

1550 Blake Ave | 507-377-2998
walmart.com

WINTERGREEN

1442 West Main Street | 507-373-0386
wintergreenalbertl.wixsite.com



AMERICINN BY WYNDHAM

811 E Plaza St | I-90 Exit 157
507-373-4324
800-206-8669
americinn.com



BEST WESTERN PLUS

821 E Plaza St
507-373-4000
800-780-7234
bestwestern.com



COMFORT INN

810 Happy Trails Ln
507-377-1100
www.choicehotels.com/minnesota/albert-lea



COUNTRY INN & SUITES BY RADISSON

2214 E. Main St
507-373-5513
800-830-5220
countryinns.com



COUNTRYSIDE INN MOTEL

2102 E. Main St
507-373-2446
888-373-1188
countrysidemotel.com



HOLIDAY INN EXPRESS

77820 E Main St
507-473-2300
800-HOLIDAY
hiexpress.com



MOTEL 6

2019 E Main St
507-377-0591
800-899-9841
motel6.com



MOTEL 65

1611 SE Broadway
507-373-9792
motel65.com



RAMADA HOTEL BY WYNDHAM

2301 E Main St
507-473-2112
800-854-9517
www.wyndhamhotels.com/ramada/albert-lea



QUALITY INN & SUITES/ ECONO LODGE

2306 Main Street
507-377-1803
choicehotels.com/Minnesota/Albert-lea

# OF ROOMS	COMP. BREAKFAST	RESTAURANT/BAR	MOTORCOACH PARKING	POOL (INDOOR)	INTERNET	MEETING ROOMS	FITNESS CENTER	RESTAURANT CLOSE BY	HANDICAP ACCESSIBLE	PETS ALLOWED
42	●		●	●	●	●		●	●	●
52	●		●	●	●	●	●	●	●	●
65	●		●	●	●		●	●	●	●
77	●		●	●	●	●	●	●	●	●
49			●		●			●	●	●
66	●		●	●	●	●	●	●	●	●
52			●		●			●	●	●
8					●					●
124	●	●	●	●	●	●	●	●	●	●
100		●	●		●	●	●	●	●	●

EVENT VENUES

ALBERT LEA ARMORY

410 Prospect Ave | 507-379-3407
Accommodates 200

ALBERT LEA CITY ARENA

701 Lake Chapeau Dr | 507-377-4374
Capacity of 1200 - 1400 in arena.
3500 March - October
Variety of other size rooms available.

ALBERT LEA FAMILY Y

2021 W Main St. | 507-373-8228
Two Rooms - capacity 60 & 40

ALBERT LEA KOA

84259 County Rd 46 | 507-373-5170
Accommodates 90

ALBERT LEA SENIOR CENTER

1739 W Main St | 507-373-0704
<http://www.seniorresourcesfc.org/>
Seating for 260 people

AMERICAN LEGION

142 N Broadway | 507-373-7993
americanlegionpost56.com
Seating for 250 people



COTTAGE AT EDGEWATER PARK

1600 E Edgewater Dr
507-377-4370
cityofalbertlea.org
Seating for 50 people

EDGEWATER BAY PAVILION

Edgewater Park | 507-377-4370
cityofalbertlea.org
Accommodates 200

FREEBORN COUNTY FAIRGROUNDS

1029 Bridge Ave | 507-373-6965
www.freeborncountyfair.com
Fairlane Building seats 300
4H Building seats 400

FREEBORN COUNTY HISTORICAL MUSEUM

1031 Bridge Ave | 507-373-8003
freeborncountyhistory.org
Seating for 200

EAGLES CLUB

205 W William St | 507-373-1162
Room one seats 45
Room two seats 150



WEDDING.
REUNION.
PARTY.
GALA.
HOLIDAY.

HOST

PLAY +



GREEN LEA GOLF COURSE

101 W Richway | 507-373-1061
Seating for 120

MARION ROSS PERFORMING ARTS CENTER

147 N Broadway | 507-377-4371
Seating for 250 people

MOOSE CLUB

1623 W Main St | 507-373-2106
<http://lodge1703.moosetables.org/>
Seating for 234-253 people

RIVERLAND COMMUNITY COLLEGE

2200 Riverland Dr | 507-433-0600
riverland.edu
Lecture hall seating for 110 people

THE BARN OF CHAPEAU SHORES

504 Lake Chapeau Dr | 507-383-8878
thebarnofchapeaushores.com
Accommodates wedding ceremony, reception and dance.
Seating for 220 at tables inside and 56 at tables on the patio

THE OUTLET

137 S Broadway Ave | 507-320-1620
theoutletmn.com
Meeting / Small Event Venue

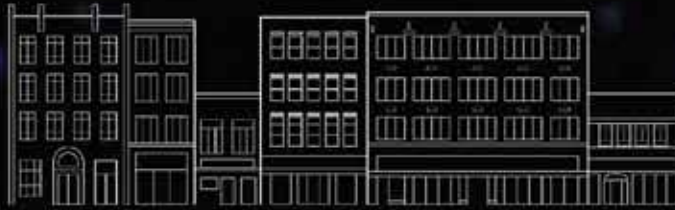
THREE OAK VINEYARDS & WINERY

73505 225th St | 507-383-1273
threeoakwines.com
Seating up to 400

WEDGEWOOD COVE

2200 W 9th St | 507-373-2007
wedgeoodcove.com
Seating for up to 480 as a whole or divide by thirds





MAIN STREET

ALBERT LEA, MINNESOTA



Albert Lea Convention & Visitors Bureau
www.explorealbertlea.com

